

Billboards



L01 – Marsa

Type: Lit, Size: 6 meters x 3 meters

Direction: Heading towards Marsa Aldo Moro Street in the South of Malta.

Price: €1,900



L02 - Marsa

Type: Lit Size: 6 meters x 3 meters

Direction: Heading towards Marsa Aldo Moro Street in the South of Malta.

Price: €1,900



L03 - Regional Road (Petrol Station)

Type: Lit, Size: 6 meters x 3 meters

Direction: Heading towards University, Msida and Birkirkara By-Pass.

Price: €1,900



L04 – Marsa Turn

Type: Lit, Size: 6 meters x 3 meters

Direction: Heading towards to Mriehel / Santa Venera tunnels.

Price: €1,900



05 – Marsa (Bezzina)

Type: Lit, Size: 6 meters x 3 meters

Direction: Aldo Moro street, heading towards the south

Price: €1,900



L06 – Mriehel By Pass (opp Gasan Showroom)

Type: Lit, Size: 6 meters x 3 meters

Direction: Heading towards Attard/Rabat

Price: €1,900



L07 - Birkirkara By-pass (After university exit/ opp mater dei)

Type: Lit, Size: 6 meters x 3 meters

Direction: Heading towards Lija / B'kara

Price: €1,900



L08 - Birkirkara By-pass

Type: Lit, Size: 6 meters x 3 meters

Direction: Heading towards Birkirkara from University area

Price: €1,900



L09 – Marsa Garibaldi (down / 3rd one)

Type: Lit, Size: 6 meters x 3 meters

Direction: Heading towards Aldo Moro from Airport

Price: €1,900



L10 – Marsa Garibaldi Street (first one)

Type: Non-Illuminated, Size: 6 meters x 3 meters

Direction: Heading towards Luqa / Airport.

Price: €1,850



L11 – Marsa

Type: Lit, Size: 6 meters x 3 meters

Direction: Heading towards Aldo Moro (before traffic lights)

Price: €1,900



L12 – Marsa

Type: Lit, Size: 6 meters x 3 meters

Direction: Heading towards Hamrun By Pass from Aldo Moro

Price: €1,900



L13 – Marsa

Type: Lit, Size: 6 meters x 3 meters

Direction: Heading towards Hamrun By Pass from Aldo Moro

Price: €1,900



L22 – B'Kara By Pass

Type: Lit, Size: 6 meters x 3 meters

Direction: Heading towards Mater Dei /University

Price: €1,900



L23 – Mriehel By Pass

Type: Lit, Size: 6 meters x 3 meters

Direction: Heading towards Attard / Rabat (Opp Atrium)

Price: €1,900



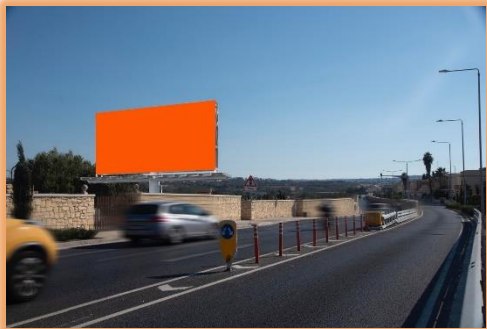
L45 – Zebbug by Pass (2 sided)

Type: Lit, Size: 6 meters x 3 meters
Direction A : Heading towards Rabat
Direction B : Heading from Rabat
Price: €1,900 each side



L46 – Qormi by Pass

Type: Lit, Size: 6 meters x 3 meters
Direction: Heading towards Zebbug / Rabat (opp Attrans)
Price: €1,900



L47 – Attard

Type: Lit, Size: 6 meters x 3 meters
Direction: Heading towards Attard /Ta Qali after Citroen Showroom.
Price: €1,900



L48 – Zebbug

Type: Lit, Size: 6 meters x 3 meters
Direction: Mdina Road, Zebbug, heading towards Qormi
Price: €1,900



L50 - San Gwann (Tal-Balal)

Type: Lit, Size: 6 meters x 3 meters
Direction: Heading towards Naxxar, Iklin, and San Pawl Tat-Tarġa.
Price: €1,900



L52 – Maghtab

Type: Lit, Size: 6 meters x 3 meters

Direction: Coast Road heading towards Bugibba

Price: €1,900



L60 - Swieqi

Type: Lit, Size: 6 meters x 3 meters

Direction: Heading towards Luxol

Price: €1,900



L62 – Naxxar triq il Mosta (opp kinds)

Type: Lit, Size: 6 meters x 3 meters

Direction: Heading towards Mosta.

Price: €1,900



L64 – Sta Venera/Regional Road (right hand side)

Type: Size: 6 meters x 3 meters

Direction: Entrance to Santa Venera tunnels direction to Regional Road.

Price: €1,900



L65 –Regional Road (underneath St Philips Hospital)

Type: Lit, Size: 6m x 3m

Direction: Heading towards St Venera tunnels direction Marsa/ Mriehel.

Price: €1,900



L66A - Msida/University Roundabout

Type: Lit, Size: 6 meters x 3 meters

Direction: Heading towards University, Msida and Birkirkara By-Pass.

Price: €1,900



L66B - Msida/University Roundabout (back)

Type: Lit, Size: 6 meters x 3 meters

Direction: Heading towards Regional Road (coming up from Msida)

Price: €1,900



L67 – Santa Venera /Mriehel

Type: Lit, Size: 4 meters x 3 meters

Direction: Entrance to Santa Venera tunnels direction to Regional Road.

Price: €1,800



L68 – Regional Road (Pixxina)

Type: Lit, Size: 6 meters x 3 meters

Direction: Heading towards Kappara roundabout and Paceville.

Price: €1,900



L69 – St Pauls Bay

Type: Lit, Size: 6 meters x 3 meters

Direction: Heading towards StPauls /Xemxija By Pass

Price: €1,900



L70 – Xemxija

Type: Lit **Size:** 6 meters x 3 meters

Direction: Heading towards to St Pauls Bay by pass (coming down from Xemxija / Mellieha)

Price: €1,900



L71 – St Pauls Bay

Type: Lit **Size:** 6 meters x 3 meters

Direction: Heading towards Bugibba (coming down from Xemxija / Mellieha)

Price: €1,900



L72 – Kennedy Grove (double sided)

Type: Lit **Size:** 6 meters x 3 meters

Direction: Opposite Kennedy Grove

Price: €1,900

Direction A : Heading towards St Julians



L72 – Kennedy Grove (double sided)

Type: Lit **Size:** 6 meters x 3 meters

Direction: Opposite Kennedy Grove

Price: €1,900

Direction B : Heading towards Mellieha

MEGA BILLBOARDS



Marsa Aldo Moro (Schembri Batteries)

SIZE 10.1mtr x 2.5mtr - **DIRECTION:** Heading towards Valletta and Aldo Moro Street pass by Super One

Price: €2,000



Msida/ University Roundabout (Bottom)

SIZE 12m x 2.5m - **DIRECTION:** Heading towards University Regional Road (next to Skate Park)

Price: €4,500 including print and installation,